



HAVELLS

**BOOST THE
POWER OF WATER**



buy online* at shop.havells.com

*Online shopping is applicable on select products.



MANUFACTURING EXCELLENCE!

From manufacturing excellence to complete home and industry solutions, Havells has been providing world class quality products to its customers at affordable prices. Its varied range of electricals not only ensures safety and reliability, they also help cut down the carbon emission footprint, conserving our limited natural resources.

Havells Pump factory is the state-of-the-art world class Pumps Manufacturing Plant spread over 169968 m² of land at Neemrana (Rajasthan). With the manufacturing capacity of over 25,000 energy efficient pumps per month, it is also one of the largest integrated plant in India.

While every plant of Havells has its own unique feature, some of the manufacturing strengths of this plant are:

- In-house manufacturing of pumps
- 100% automatic winding lines
- Automatic impregnation plant
- Fully automated temperature controlled paint stations
- Modern automatic type hydraulic test lab
- Complete computerised testing facility

With a fully equipped pumps manufacturing division and more than skilled workforce, Havells is ready to imbibe every product with commitment, hard work, and quality, making a difference to millions of lives.



ABOUT HAVELLS

A company with an unflinching commitment to quality, innovation, and customer satisfaction, Havells India Limited has today emerged as a dominant player in the Fast Moving Electrical Goods industry. The company manufactures a number of products ranging from Cables, Wires and Switchgear in domestic and industrial segments, to Fans, Water Heaters, Small Appliances, Water Pumps, Air coolers, Personal Grooming, Home Automation, Switches, LED lighting & fixtures in the consumer facing segments. With the acquisition of Lloyd, and the entry into the Water Purifier and Personal grooming category, the company has become a fine example of successful transition and transformation from a Fast Moving Electrical Goods manufacturer to a true Consumer Durables company, steadily spreading its operations across India.

Havells started its operations in the 1970s and since then, the company has used a judicious mix of organic growth and inorganic opportunities to boost revenues and scale up business. Global recognition came Havells' way in 2007 with the stunning acquisition profile Sylvania, which also pitch-forked it among the top four lighting companies across the world. The company today owns a range of established and prestigious brands like Havells, Lloyd, Crabtree and Standard that are sold through its extensive network of dealers and retailers spread across the country. Havells has 12 state-of-the-art manufacturing units in the country located at Haridwar, Baddi, Sahibabad, Faridabad, Assam, Alwar and Neemrana. These units manufacture globally acclaimed products, synonymous with excellence and precision.

The company has a strong domestic presence with 40 offices employing close to 6,500 professionals across the country supported by over 7,600 dealers and distributors with world-class service network in 400 cities across India. Given the enormous size, scale and reach of the operations, Havells today has 415 exclusive brands shop known as Havells Galaxies to provide better shopping experience to our consumers.

WIDE PRODUCTS OF
SUBMERSIBLE PUMPSETS,
MONOBLOCK PUMPS,
PRESSURE PUMP
& **SEWAGE** PUMPS.

BOOST THE POWER OF WATER



SELF PRIMING MONOBLOCK PUMP



Features:

Operating Conditions

- Maximum operating water temperature: upto 55 °C
- Max working pressure: 5.7 kg/cm² (0.57 MPa)
- High suction with self-priming capacity upto 8 metre
- Low power consumption
- Wide voltage operating range 220 V (+6%, -15%)
- Direction of rotation: Anti-Clockwise when viewed from driving end

Motor

- Motor body: High quality aluminum pressure die casted / aluminum extruded
- Motor Stator: Low Watt loss silicon steel laminations
- Rotor: Dynamically balanced
- TEFC motor (2 pole / 4 pole) suitable for 220 V (+6%, -15%), 50 Hz single phase AC power supply
- In-built thermal overload protector (T.O.P)
- Motor Insulation Class F / Class B
- IP-54 / IP-65

Benefits of Havells Pump

Motor Insulation Class F / Class B:

Motor design is compact and motor temperature withstand capacity increases upto 155 °C / 130 °C, it protects motor from winding burning due to voltage fluctuations.

IP-54: Protection suitable for outdoor application under sun-roof.

IP-65: Protection suitable for outdoor application (Water Ingress Protection)

Motor Windings:

F Class copper winding wires gives high motor efficiency and high temperature withstanding capacity.

Thermal Overload Protector (TOP):

Havells Pumps are provided with TOP to safe guard motor from burning.

Pump Shaft:

Stainless Steel / Carbon Steel Shaft ensures longer life.

Applications

- Used in gardening, farm houses & building construction
- For lifting water to overhead storage tanks
- Pressure booster systems
- Hotels, hospitals and fountains
- Water circulation in Industries

Pump Construction

- CED coated cast iron hydraulic parts for corrosion free performance
- Pump Casing: Cast iron FG 200
- Impeller: Forged brass for longer life
- Shaft: High grade stainless steel / carbon steel
- Mechanical seal: Carbon Vs ceramics

Pump Casting:

High Grade Pump Castings (FG-200 grade)* ensures the better mechanical strength hence enhanced pump life.

Pump Seal:

High quality mechanical seal has long life with lesser wear and tear.

Impeller:

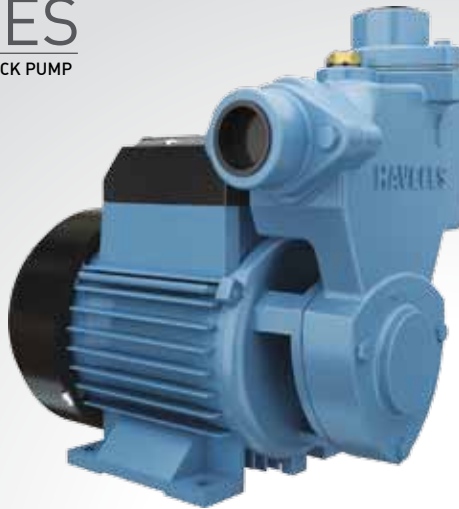
Forged Brass impeller is wear & tear resistant.

Pump Warranty*: Pumps with upto 2 Year Warranty stands for high quality assurance.

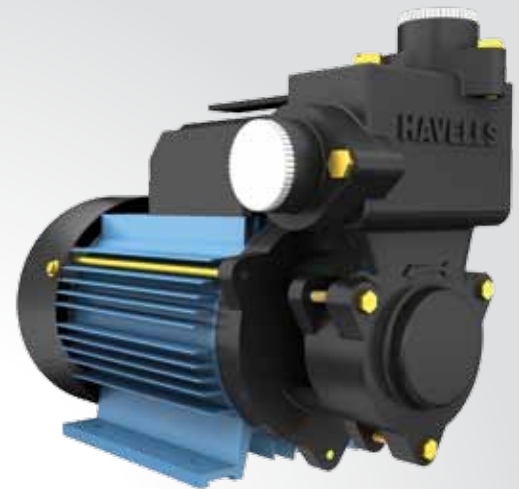
Home Service: Home service of the pumps assures trouble free service at customer door step.

HIGH FLOW S-SERIES

SELF PRIMING MONOBLOCK PUMP



S2, S1



S1.5W

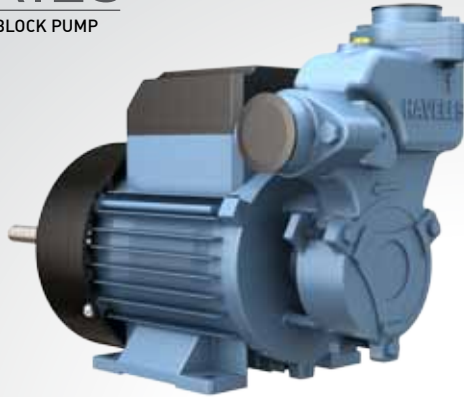
Features:

- Motor body: High quality aluminum pressure die casted / extruded
- 50 Hz single phase AC power supply
- Motor Insulation Class F
- In-built thermal overload protector (T.O.P)
- IP-65 protection available in select model
- CED coated cast iron hydraulic parts for corrosion free performance
- Stainless Steel Shaft SS410 / Carbon Steel Shaft
- Pump Casing: Cast iron FG 200

Model	Power		Pipe Size (Suc x Del)	Total Head in metre															
				6 m	9 m	12 m	15 m	18 m	21 m	24 m	27 m	30 m	33 m	34 m	40 m	45 m	50 m	56 m	57 m
	kW	HP	mm	Discharge in Litre per Hour															
S2	0.37 kW	0.5 HP	25 mm x 25 mm	2700	2550	2350	2150	1870	1570	1360	1080	900	610	490					
S1	0.75 kW	1.0 HP	25 mm x 25 mm	4200	4000	3860	3600	3440	3120	2880	2600	2420	2160	2100	1730	1360	1090	640	
S1.5W	1.1 kW	1.5 HP	25 mm x 25 mm					4700	4500	4300	4100	3850		3550	3030	2580	2100		1400

HIGH FLOW SE-SERIES

SELF PRIMING MONOBLOCK PUMP



SE2E



SE2, SE1

Features:

- Motor body: High quality aluminum pressure die casted
- 50 Hz single phase AC power supply
- Motor Insulation Class F
- In-built thermal overload protector (T.O.P.)
- IP-65 protection available in select model
- CED coated cast iron hydraulic parts for corrosion free performance
- Stainless Steel Shaft SS410 / Carbon Steel Shaft
- Pump Casing: Cast iron FG 200

Model	Power		Pipe Size (Suc x Del)	Total Head in metre															
				6 m	9 m	12 m	15 m	18 m	21 m	24 m	27 m	30 m	32 m	34 m	36 m	38 m	40 m	45 m	46 m
	kW	HP	mm	Discharge in Litre per Hour															
SE2	0.37 kW	0.5 HP	25 mm x 25 mm	2600	2360	2110	1870	1600	1370	1110	870	600							
SE2E*	0.37 kW	0.5 HP	25 mm x 25 mm	2600	2360	2110	1870	1600	1370	1110	870	600							
SE1	0.75 kW	1.0 HP	25 mm x 25 mm	3500	3305	3110	2915	2720	2525	2330	2135	1940	1810	1680	1550	1420	1290	965	900

*With extended shaft. (1 year warranty)

HIGH FLOW M-SERIES

SELF PRIMING MONOBLOCK PUMP



M2 , M1

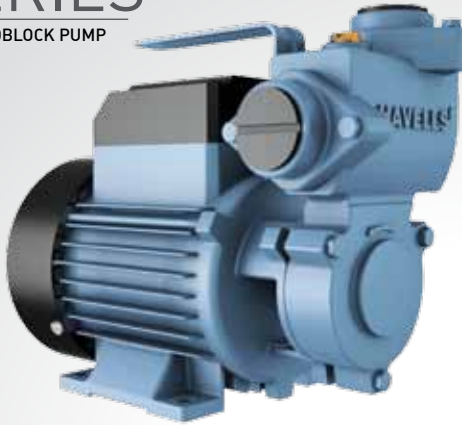
Features:

- Motor body: High quality aluminum pressure die casted
- 50 Hz single phase AC power supply
- Motor Insulation Class F
- In-built thermal overload protector (T.O.P.)
- IP-65 Protected Motor
- CED coated cast iron hydraulic parts for corrosion free performance
- Stainless Steel Shaft SS410
- Pump Casing: Cast iron FG 200

Model	Power		Pipe Size (Suc x Del) mm	Total Head in metre													
	kW	HP		6 m	9 m	12 m	15 m	18 m	21 m	24 m	27 m	30 m	33 m	36 m	38 m	45 m	50 m
M2	0.37 kW	0.5 HP	25 mm x 25 mm	2450	2170	1910	1640	1370	1110	850	580	380					
M1	0.75 kW	1.0 HP	25 mm x 25 mm	3400	3200	3000	2800	2600	2400	2200	2000	1800	1600			850	580

HIGH FLOW MX-SERIES

SELF PRIMING MONOBLOCK PUMP



MX2, MX1



MX1E

Features:

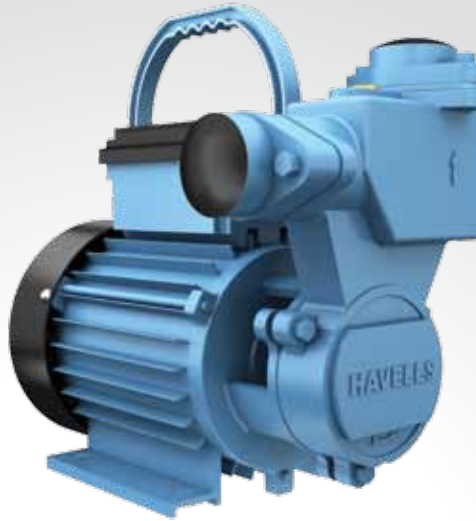
- Motor body: High quality aluminum pressure die casted
- 50 Hz single phase AC power supply
- Motor Insulation Class F
- In-built thermal overload protector (T.O.P.)
- IP-65 Protected Motor
- CED coated cast iron hydraulic parts for corrosion free performance
- Carbon Steel Shaft
- Pump Casing: Cast iron FG 200

Model	Power		Pipe Size (Suc x Del) mm	Total Head in metre													
	kW	HP		6 m	9 m	12 m	15 m	18 m	21 m	24 m	27 m	30 m	33 m	36 m	38 m	45 m	50 m
MX2	0.37 kW	0.5 HP	25 mm x 25 mm	2050	1800	1550	1290	1040	780	500							
MX1	0.75 kW	1.0 HP	25 mm x 25 mm	3200	2970	2700	2500	2250	2025	1750	1500	1275	950	660	420		
MX1E*	0.75 kW	1.0 HP	25 mm x 25 mm	3200	2970	2700	2500	2250	2025	1750	1500	1275	950	660	420		

*With extended shaft. (1 year warranty)

HIGH FLOW MP-SERIES

SELF PRIMING MONOBLOCK PUMP



MP2, MP1

Features:

- Motor body: High quality aluminum extruded
- 50 Hz single phase AC power supply
- Motor Insulation Class F
- In-built thermal overload protector (T.O.P.)
- CED coated cast iron hydraulic parts for corrosion free performance
- Carbon Steel Shaft
- Pump Casing: Cast iron FG 200

Model	Power		Pipe Size (Suc x Del)	Total Head in metre													
				6 m	9 m	12 m	15 m	18 m	21 m	24 m	25 m	27 m	30 m	33 m	36 m	37 m	40 m
	kW	HP	mm	Discharge in Litre per Hour													
MP2	0.37 kW	0.5 HP	25 mm x 25 mm	1850	1650	1440	1210	1000	750	540	400						
MP1	0.75 kW	1.0 HP	25 mm x 25 mm	3000	2840	2680	2500	2300	2100	1920	1850	1700	1500	1290	1070	870	800

HIGH FLOW HYDRANT

SELF PRIMING MONOBLOCK PUMP



HYDRANT2, HYDRANT1

Features:

- Wide voltage application suitable from 180 V – 260 V
- Motor body: High quality aluminum extruded
- 50 Hz single phase AC power supply
- Motor Insulation Class F
- In-built thermal overload protector (T.O.P.)
- CED coated cast iron hydraulic parts for corrosion free performance
- Carbon Steel Shaft
- Pump Casing: Cast iron FG 200

Model	Power		Pipe Size (Suc x Del)	Total Head in metre												
				6 m	9 m	12 m	15 m	18 m	21 m	22 m	24 m	27 m	30 m	32 m	33 m	34 m
	kW	HP	mm	Discharge in Litre per Hour												
HYDRANT2	0.37 kW	0.5 HP	25 mm x 25 mm	1900	1620	1350	1080	810	450							
HYDRANT1	0.75 kW	1.0 HP	25 mm x 25 mm	2700	2500	2290	2080	1860	1650	1560	1420	1220	1000	840		700

HIGH FLOW BRIONY-SERIES

SELF PRIMING MONOBLOCK PUMP



BRIONY2, BRIONY1

Features:

- Wide voltage application suitable from 180 V – 260 V
- Motor body: High quality aluminum extruded
- 50 Hz single phase AC power supply
- Motor Insulation Class B
- In-built thermal overload protector (T.O.P.)
- CED coated cast iron hydraulic parts for corrosion free performance
- Carbon Steel Shaft
- Pump Casing: Cast iron FG 200

Model	Power		Pipe Size (Suc x Del) mm	Total Head in metre											
				6 m	9 m	12 m	15 m	18 m	21 m	24 m	27 m	30 m	33 m	34 m	
	kW	HP		Discharge in Litre per Hour											
BRIONY2	0.37 kW	0.5 HP	25 mm x 25 mm	1900	1670	1410	1120	820	450						
BRIONY1	0.75 kW	1.0 HP	25 mm x 25 mm	2600	2400	2200	1950	1700	1450	1200	940	670	400		

HIGH FLOW SAGAR SERIES

SELF PRIMING MONOBLOCK PUMP



SAGAR2, SAGAR1

Features:

- Wide voltage application suitable from 180 V – 260 V
- Motor body: High quality aluminum extruded
- 50 Hz single phase AC power supply
- Motor Insulation Class F
- In-built thermal overload protector (T.O.P)
- CED coated cast iron hydraulic parts for corrosion free performance
- Carbon Steel Shaft
- Pump Casing: Cast iron FG 200

Model	Power		Pipe Size (Suc x Del)	Total Head in metre												
				6 m	9 m	12 m	15 m	18 m	21 m	22 m	24 m	27 m	30 m	32 m	33 m	34 m
	kW	HP	mm	Discharge in Litre per Hour												
SAGAR2	0.37 kW	0.5 HP	25 mm x 25 mm	2000	1750	1490	1220	950	600							
SAGAR1	0.75 kW	1.0 HP	25 mm x 25 mm	2700	2490	2280	2080	1860	1650	1560	1420	1220	980		700	

HIGH FLOW ZINNAIA Plus SERIES

SELF PRIMING MONOBLOCK PUMP



ZINNAI 2 Plus, ZINNAI 1 Plus

Features:

- Motor body: High quality aluminum extruded
- 50 Hz single phase AC power supply
- Motor Insulation Class F
- In-built thermal overload protector (T.O.P.)
- CED coated cast iron hydraulic parts for corrosion free performance
- Carbon Steel Shaft
- Pump Casing: Cast iron FG 200

Model	Power		Pipe Size (Suc x Del)	Total Head in metre											
				6 m	9 m	12 m	15 m	18 m	21 m	24 m	27 m	30 m	33 m	34 m	
	kW	HP	mm	Discharge in Litre per Hour											
NEW ZINNAI2 Plus	0.37 kW	0.5 HP	25 mm x 25 mm	1900	1600	1310	1020	740	450						
NEW ZINNAI1 Plus	0.75 kW	1.0 HP	25 mm x 25 mm	2700	2460	2220	1980	1740	1500	1260	1020	780	540	450	

HIGH FLOW BOOM-SERIES

SELF PRIMING MONOBLOCK PUMP

18 MONTHS
WARRANTY



Boom2, Boom1

Features:

- Motor body: High quality aluminum extruded with plastic cannopy
- 50 Hz single phase AC power supply
- Motor Insulation Class F
- In-built thermal overload protector (T.O.P.)
- CED coated cast iron hydraulic parts for corrosion free performance
- Carbon Steel Shaft
- Pump Casing: Cast iron FG 200

Model	Power		Pipe Size (Suc x Del)	Total Head in metre										
				6 m	9 m	12 m	15 m	18 m	21 m	24 m	28 m	32 m	36 m	38 m
	kW	HP	mm	Discharge in Litre per Hour										
BOOM2	0.37 kW	0.5 HP	25 mm x 25 mm	1950	1725	1500	1250	1000	750	500	200			
BOOM1	0.75 kW	1 HP	25 mm x 25 mm	3200	2925	2675	2425	2150	1900	1650	1300	950	600	450

HIGH FLOW HS-SERIES

SELF PRIMING MONOBLOCK PUMP



HS2



HVFL02



HVFL01

Features:

- Motor body: High quality aluminum pressure die casted
- 50 Hz single phase AC power supply
- Motor Insulation Class F
- In-built thermal overload protector (T.O.P.)
- CED coated cast iron hydraulic parts for corrosion free performance
- Carbon Steel Shaft
- Pump Casing: Cast iron FG 200

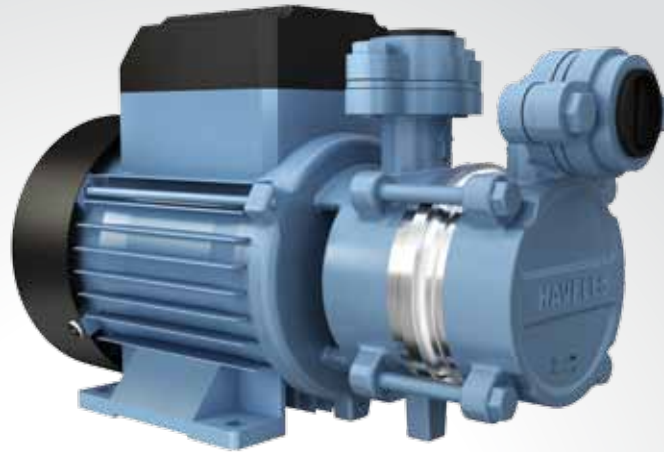


Model	Power		Pipe Size (Suc x Del)	Total Head in metre												
				6 m	9 m	12 m	15 m	18 m	21 m	24 m	27 m	30 m	33 m	36 m	39 m	42 m
	kW	HP	mm	Discharge in Litre per Hour												
HS2	0.37 kW	0.5 HP	25 mm x 25 mm	3000	2700	2350	2000	1650	1300	950	600	250				
HVFL02	0.37 kW	0.5 HP	25 mm x 25 mm	2700	2400	2100	1750	1400	1100	760	450					
*HVFL01	0.75 kW	1.0 HP	25 mm x 25 mm	3050	2835	2625	2410	2200	1985	1775	1560	1350	1135	925	710	500

*With 2 year warranty.

HIGH FLOW A SERIES

SELF PRIMING MONOBLOCK PUMP



AL2, A1

Features:

- Motor body: High quality aluminum pressure die casted
- 50 Hz single phase AC power supply
- Motor Insulation Class F
- In-built thermal overload protector (T.O.P.)
- CED coated cast iron hydraulic parts for corrosion free performance
- Stainless Steel Shaft SS410
- Stainless Steel Hydraulic Parts

Model	Power		Pipe Size (Suc x Del) mm	Total Head in metre															
				3 m	6 m	9 m	12 m	15 m	18 m	21 m	24 m	27 m	30 m	31 m	32 m	35 m	36 m	39 m	
	kW	HP	Discharge in Litre per Hour																
AL2	0.37 kW	0.5 HP	13 mm x 13 mm	1600	1500	1385	1235	1110	950	800	675	480	270						
A1	0.75 kW	1.0 HP	25 mm x 25 mm		2450	2330	2200	2080	1970	1840	1725	1550	1340		1120			825	535

HIGH FLOW DARIYA-SERIES

SELF PRIMING MONOBLOCK PUMP



DARIYA05, DARIYA07, DARIYA10

Features:

- Motor body: High quality aluminum pressure die casted
- 50 Hz single phase AC power supply
- Motor Insulation Class F
- In-built thermal overload protector (T.O.P.)
- CED coated cast iron hydraulic parts for corrosion free performance
- Carbon Steel Shaft
- Stainless Steel Hydraulic Parts

Model	Power		Pipe Size (Suc x Del)	Total Head in metre														
				3 m	6 m	9 m	12 m	15 m	18 m	21 m	24 m	27 m	30 m	31 m	32 m	35 m	36 m	39 m
	kW	HP	mm	Discharge in Litre per Hour														
DARIYA 05	0.37 kW	0.5 HP	13 mm x 13 mm		1850	1670	1480	1300	1110	920	730	540	350					
DARIYA 07	0.55 kW	0.75 HP	25 mm x 25 mm		2000	1820	1640	1460	1280	1100	920	740	560	500				
DARIYA 10	0.75 kW	1.0 HP	25 mm x 25 mm		2100	1920	1750	1580	1400	1220	1060	890	710	650		420		

HIGH FLOW D-SERIES

SELF PRIMING MONOBLOCK PUMP



D10



D2, D1

Features:

- Motor body: High quality graded cast iron / Sheet Metal
- 50 Hz single phase AC power supply
- Motor Insulation Class F
- In-built thermal overload protector (T.O.P.)
- CED coated cast iron hydraulic parts for corrosion free performance
- Stainless Steel Shaft SS410
- Pump Casing: Cast iron FG 200

Model	Power		Pipe Size (Suc x Del)	Total Head in metre													
				6 m	9 m	12 m	15 m	18 m	21 m	24 m	27 m	30 m	33 m	36 m	39 m	41 m	42 m
	kW	HP	mm	Discharge in Litre per Hour													
D2	0.37 kW	0.5 HP	25 mm x 25 mm	3000	2675	2350	2025	1700	1375	1050	725	400					
D1	0.75 kW	1.0 HP	25 mm x 25 mm	4000	3725	3450	3175	2905	2630	2355	2080	1805	1530	1260	985	800	
D10	0.75 kW	1.0 HP	25 mm x 25 mm				2900	2800	2540	2300	2080	1860	1640	1440	1240	1130	1060

*D-Series motor have 1450 r / min (revolutions per minute) 4 Pole

HIGH FLOW JSE/JSE1HF SERIES

SELF PRIMING SHALLOW WELL JET PUMP



JSE2, JSE1



JSE1HF

Features:

- Motor body: High quality aluminum extruded
- 50 Hz single phase AC power supply
- In-built thermal overload protector (T.O.P.)
- Motor Insulation Class F
- CED coated cast iron hydraulic parts for corrosion free performance
- Pump Casing: Cast iron FG 200

Model	Power		Pipe Size (Suc x Del)	Total Head in metre													
				6 m	9 m	12 m	15 m	18 m	21 m	24 m	27 m	30 m	33 m	36 m	38 m	40 m	
	kW	HP	mm	Discharge in Litre per Hour													
JSE2	0.37 kW	0.50 HP	25 mm x 25 mm	3000	2910	2830	2750	2670	2150	1650	1090	500					
JSE1	0.75 kW	1.00 HP	25 mm x 25 mm			2850	2770	2690	2600	2490	2150	1760	1290	600			
JSE1HF	0.75 kW	1.00 HP	25 mm x 25 mm					2850	2780	2700	2600	2300	1750	1150	750	400	

HIGH FLOW JET PUMP

SELF PRIMING DEEP WELL JET PUMP



Features:

- Motor body: High quality aluminum extruded
- 50 Hz single phase AC power supply
- In-built thermal overload protector (T.O.P.)
- Motor Insulation Class F
- CED coated cast iron hydraulic parts for corrosion free performance
- Pump Casing: Cast iron FG 200

Model	Min. Bore-well size (mm)	Pipe Size			Minimum Operating Pressure in kg / cm ²	Power		Total Head in metre															
		Suc.	Pres.	Dis.		kW	HP	9 m	12 m	15 m	18 m	21 m	24 m	27 m	30 m	33 m	36 m	39 m	40 m	42 m	45 m	48 m	51 m
								Discharge in Litre per Hour															
BWJ12T	100 mm	32 mm	25 mm	25 mm	1.8 kg / cm ²	0.75 kW	1.0 HP			1360	1330	1275	1260	1160	1035	930	810	700	660	585	470	400	230
BWJ11T	100 mm	32 mm	25 mm	25 mm	1.6 kg / cm ²	0.75 kW	1.0 HP	1800	1740	1640	1450	1285	1070	880	760	570	470	370	320				
BWJ11P	80 mm	40 mm	32 mm	25 mm	1.6 kg / cm ²	0.75 kW	1.0 HP	2100	2020	1740	1320	900	640	450	250								

HIGH FLOW CHESTER SERIES

OPENWELL SUBMERSIBLE PUMP



Features:

- Integrated Suction for Motor protection
- Specially designed Noryl Impeller
- Cathodic Electro Deposition (CED) coated Cast Iron Parts
- Energy Efficient Motor design
- Stainless Steel Vs Carbon & Hylam Thrust Bearing set with
- Carbon Bush for longer life
- Stainless Steel Motor Housing and Shaft

Model	Power		Del.Size	Total Head in metre											
				8 m	10 m	13 m	14 m	15 m	16 m	17 m	18 m	21 m	23 m	25 m	28 m
	kW	HP	mm	Discharge in Litre per minute											
CHESTER M05	0.37 kW	0.5 HP	25 mm	145	130	110	100	90	80	70	55				
CHESTER M10	0.75 kW	1.0 HP	25 mm				170		160		150	130	110	90	40

HIGH FLOW GOLDIE SEREIS

OPEN WELL SUBMERSIBLE PUMP



Features:

- Specially designed Noryl impeller or Cast iron Impeller 1.5 kW (2 HP)
- Cathodic Electro Deposition (CED) Coated Cast Iron Parts
- Energy efficient Motor design
- Stainless Steel Vs Carbon & Hylam 0.75 kW (1 HP) Thrust Bearing set with Bronze Bush for long life
- Stainless Steel Motor Housing and Shaft

Model	Power		Pipe Size (Suc x Del) mm	Total Head in metre																	
	kW	HP		6 m	8 m	10 m	12 m	14 m	16 m	17 m	18 m	20 m	21 m	22 m	24 m	26 m	27 m	28 m	30 m	35 m	39 m
GOLDIE2	0.37 kW	0.5 HP	25 mm x 25 mm		140	135	125	108	80	55											
GOLDIE1	0.75 kW	1.0 HP	25 mm x 25 mm				160	148	135		121	106		90	73		40				
GOLDIE N1.5	1.1 kW	1.5 HP	32 mm x 25 mm				200	196			185	180			160	150			120	30	
GOLDIE K1.5	1.1 kW	1.5 HP	32 mm x 32 mm				230	223			210	200			180	165			140	85	25
GOLDIE J2	1.5 kW	2.0 HP	50 mm x 40 mm		410		385		350			300			245				100		
GOLDIE Q2	1.5 kW	2.0 HP	50 mm x 50 mm	600			490		410		360	280	150								

Model	Power		Pipe Size (Suc x Del) mm	Total Head in metre				
	kW	HP		30	35	40	42	45
*GOLDIE M1.5-45	1.1 kW	1.5 HP	25 mm x 25 mm	140	120	80	50	30

* 1.5 HP GOLDIE M1.5-45 with SS 304 Fabricated Impeller.

PRESSURE PUMP



HMP
(Multistage Pressure Pump)



HMS
(Multistage Pressure Pump)



HBJSE
(Self Priming Pressure Jet Pump)

Features:

- Pressure Pump and controller are designed to automatically start / stop on opening and closing of faucets to maintain constant water pressure.
- Pressure Pump are fitted with Y type brass strainer to avoid entry of dirt/ foreign particles.
- Pressure pump Cut-in & Cut-off pressures are settable for fine tuning as per site condition if required.
- HBTJSE, HMS, HMP series are fitted with float level switch to prevent dry run.
- Pressure pump are fitted with high quality hydro-pneumatic pressure tank.



HBTM
(Self Priming Pressure Pump)

PRESSURE PUMP

MODEL	Power		Recommended Faucets	Pipe Size	Head in metre								
	kW	HP			mm	15 m	18 m	21 m	24 m	27 m	30	33	36
				Discharge in Litre per hour									
HBTM2	0.37 kW	0.5 HP	(1-2) Outlets	25 mm X 25 mm	1390	1130	900	700	300				
HBTM1	0.75 kW	1.00 HP	(1-4) Outlets	25 mm X 25 mm	2500	2250	1950	1725	1450	1200	920	700	500

MODEL	Power		Recommended Faucets	Pipe Size	Head in metre								
	kW	HP			mm	15 m	18 m	21 m	24 m	27 m	28 m	30 m	32 m
				Discharge in Litre per hour									
HBTJSE2	0.37 kW	0.5 HP	(1-3) Outlets	25 mm X 25 mm	2600	2520	2150	1650	1090	960			
HBTJSE1	0.75 kW	1.00 HP	(1-5) Outlets	25 mm X 25 mm	2700	2650	2600	2490	2150	2050	1760	1200	

MODEL	Power		Recommended Faucets	Pipe Size	Head in metre											
	kW	HP			mm	15 m	18 m	21 m	25 m	28 m	30 m	33 m	36 m	40 m	44 m	48 m
				Discharge in Litre per minute												
HMPM2-305-V24	0.37 kW	0.5 HP	(1-2) Outlets	25 mm X 25 mm	50	43	35	20								
HMPM2-5100-V24	0.75 kW	1.00 HP	(1-4) Outlets	25 mm X 25 mm	65	61	58	53	49	47	43	38	30	23		
HMSM2-5100-V24	0.75 kW	1.00 HP	(1-4) Outlets	25 mm X 25 mm	72	67	62	57	52	48	40	34	20			
HMSM2-6100-V24	0.75 kW	1.00 HP	(1-5) Outlets	25 mm X 25 mm	75	73	71	67	63	60	56	52	44	35	20	
HMSN4-4100-V35	0.75 kW	1.00 HP	(1-6) Outlets	32 mm X 25 mm	108	98	88	72	60	50	30					
HMSN4-6150-V35	1.10 kW	1.50 HP	(1-8) Outlets	32 mm X 25 mm	125	123	118	110	105	100	93	85	70	55	40	30

AUTOMATIC PUMP CONTROLLER

PressCon

Features

- Automatic start/stop of pump as per faucet operation
- In Built reset button
- Integrated with dry run protection.
- IP65 protected
- Silent Operation

Operating Conditions

Rated Voltage	: 220 V - 240 V
Frequency	: 50 Hz / 60 Hz
Max. Current	: 10 A
Max. Power	: 1.1 kW / 1.5 HP
Max. Pressure	: 10 bar
Max. Temperature	: 60 °C
Thread Connection	: G 1 – ISO 228



H10



V10

Model	Pipe Size (Suc x Del)	Cut-in pressure	Max. Pressure
PressCon H10	25 mm x 25 mm	1.5 Bar	10 Bar
PressCon V10	25 mm x 25 mm	1.5 Bar	10 Bar

FLOAT SWITCH



Operating Conditions

Rated Voltage	: 220 V - 240 V
Frequency	: 50 Hz / 60 Hz
Max. Current	: 10 A
Max. Power	: 1.1 kW / 1.5 HP
Max. Temperature	: 60 °C
IP Protection	: IP 67

*Available with cable length of 3 metre & 5 metre.

HIGH FLOW SEWAGE PUMP



Product Features:

- Motor is thermal overload protected, designed for wide voltage fluctuation
- Dynamically balanced rotor for trouble free & efficient operation
- SS-410 grade stainless steel shaft for rust free operations
- Motor with class 'F' insulation for longer life
- Fitted with high quality mechanical seal
- High grade CI-FG 200 Impeller for longer life
- Float switch provided with 1-Phase pumps
- Easy interchangeability of components.
- All CI parts with CED coating
- Control Panel will be provided only with 2.25 kW (3 HP) -1 Phase pump for efficient operation

Model	Power			Outlet (mm)	Solid Size (mm)	Discharge in L / min														
	kW	HP	Phase			mm	40	70	100	130	170	220	250	300	320	400	640	600	800	1050
							Total Head in metre													
HSXB20-05	0.37 kW	0.5 HP	1 Ph	32 mm	20 mm	7.5 m	7 m	6.5 m	6 m	5 m										
HSXD35-10	0.75 kW	1 HP	1 Ph	50 mm	35 mm				10 m			9 m		8 m	7 m					
HSXD35-10T	0.75 kW	1 HP	3 Ph	50 mm	35 mm				10 m			9 m		8 m	7 m					
HSXD35-20	1.5 kW	2 HP	1 Ph	50 mm	35 mm			14 m			13 m			12 m	11 m	10 m	8 m			
HSXD35-20T	1.5 kW	2 HP	3 Ph	50 mm	35 mm			14 m			13 m			12 m	11 m	10 m	8 m			
HSXV45-30	2.2 kW	3 HP	1 Ph	75 mm	45 mm							17 m			16 m	14 m	11 m	7 m		
HSXV45-30T	2.2 kW	3 HP	3 Ph	75 mm	45 mm							17 m			16 m	14 m	11 m	7 m		

NON-SELF PRIMING REGENERATIVE MONOBLOCK PUMP

MAXN SERIES



Features

- High quality aluminum extruded motor body
- TEFC motor (2 pole) suitable for 220 V (+6%, -15%),
- 50 Hz single phase AC power supply
- In-built thermal overload protector (T.O.P.)
- Motor with F class Insulation
- CED coated cast iron hydraulic parts for corrosion free performance

Product Applications:

- Water transfer in domestic applications.
- Gardening, Farm house
- Lifting water to overhead tanks.

Material of Construction

- Pump Casing : CI FG200
- Impeller : Brass
- Adaptor : CI FG200
- Mechanical seal : Carbon vs Ceramic

Model	Power		Pipe Size (Suc x Del)	Total Head in metre													
				6 m	9 m	12 m	15 m	18 m	21 m	24 m	27 m	30 m	33 m	36 m	39 m	42 m	45 m
	kW	HP	mm	Discharge in Litre per Hour													
MAXN2	0.37 kW	0.5 HP	25 mm x 25 mm	1900	1600	1310	1105	840	600	400							
MAXN1	0.75 kW	1.0 HP	25 mm x 25 mm	2700	2400	2200	2050	1850	1720	1570	1390	1250	1080	960	720	550	450

CENTRIFUGAL MONOBLOCK PUMP



Features

- High quality aluminum extruded motor body
- TEFC motor (2 pole) suitable for 220 V (+6%, -15%),
- 50 Hz single phase AC power supply
- In-built thermal overload protector (T.O.P.)
- Motor with F class Insulation
- CED coated cast iron hydraulic parts for corrosion free performance

Product Applications:

- Water transfer in domestic applications.
- Gardening, Farm house
- Lifting water to overhead tanks.

Material of Construction

- Pump Casing : CI FG200
- Impeller : Brass
- Adaptor : CI FG200
- Mechanical seal : Carbon vs Ceramic

Model	Power		Pipe Size (Suc x Del)	Total Head in metre										
				11 m	13 m	15 m	17 m	19 m	21 m	23 m				
	kW	HP	mm	Discharge in Litre per minutes										
CMM10EX	0.75 kW	1.0 HP	25 mm x 25 mm	85	78	69	60	49	35	20				

HIGH FLOW C-SERIES

CENTRIFUGAL MONOBLOCK PUMP



Motor:

- TEFC motor with 'F' Class insulation
- Motor voltage range : L - 120 V - 220 V, W - 170 V - 270 V or 180 V - 250 V, DW - 180 V - 420 V
- In-built thermal overload protector (T.O.P)
- Motor body : CI FG200 for longer life.
- Motor designed for optimum life, low power consumption
- Dynamically Balanced Rotor - Better efficiency & performance.
- Sealed Anti-friction bearing both side for longer life.

Pump:

- High grade pump casing casting (FG 200) ensures the better mechanical strength
- Carbon Steel shaft ensures longer Life of pump
- Carbon Vs ceramics graphite mechanical seal has longer life with lesser wear & tear
- Dynamically Balanced Impellers - Better life & Performance

Applications:

- Small farm irrigations & Gardening
- Lawn sprinklers
- Construction site
- Domestic & community water supply
- Water transfer & circulations

Model	Power		Pipe Size (Suc x Del)	Total Head in metre																					
				5 m	6 m	8 m	9 m	10 m	12 m	14 m	15 m	16 m	17 m	18 m	19 m	20 m	21 m	22 m	24 m	25 m					
	kW	HP	mm	Discharge in Litre per Hour																					
CM05	0.37 kW	0.5 HP	25 mm x 25 mm								7000		6680		5670		3970		1830						
CMM05	0.37 kW	0.5 HP	25 mm x 25 mm					6000	4700	3100	2100														
CMM05HH	0.37 kW	0.5 HP	25 mm x 25 mm														6300		5200	3300	2000				
CMM05-14*	0.37 kW	0.5 HP	25 mm x 25 mm				5400		4200	2700															
CMM05-18*	0.37 kW	0.5 HP	25 mm x 25 mm				6300		5400	4800						2700									
CMM05-18CI	0.37 kW	0.5 HP	25 mm x 25 mm				6300		5400	4800						2700									
CMM05-21*	0.37 kW	0.5 HP	25 mm x 25 mm						6300	5700						3900					2100				
CMP05	0.37 kW	0.5 HP	40 mm x 40 mm		14100	13420		12800	11150	4050															
CMP05E	0.37 kW	0.5 HP	40 mm x 40 mm		14100	13420		12800	11150	4050															
CMQ05E	0.37 kW	0.5 HP	50 mm x 50 mm	19500	17400		12400	9000																	

Model	Power		Pipe Size (Suc x Del)	Total Head in metre																		
				5 m	6 m	8 m	9 m	10 m	12 m	14 m	15 m	16 m	17 m	18 m	20 m	21 m	22 m	24 m	26 m	28 m	29 m	
	kW	HP	mm	Discharge in Litre per Hour																		
CMM10	0.75 kW	1 HP	25 mm x 25 mm								6560		6430		6360	6240		6110		4100	2520	
CMM10-30*	0.75 kW	1 HP	25 mm x 25 mm							5400	5160				4620		4080		3300	2700		1260
CMN10-29*	0.75 kW	1 HP	32 mm x 25 mm							6900	6600				5700		4800		3600	2700		900
CMP10-W	0.75 kW	1 HP	40 mm x 40 mm	18000		16500				13800	11800		9400	8000								
CMJ10D	0.75 kW	1 HP	50 mm x 40 mm			24000		19800	14820	9000												
CMQ10	0.75 kW	1 HP	50 mm x 50 mm			24000		19800	14820	9000												
CMQ10D	0.75 kW	1 HP	50 mm x 50 mm			24000		19800	14820	9000												
CMQ10E	0.75 kW	1 HP	50 mm x 50 mm			24000		19800	14820	9000												
CMV10	0.75 kW	1 HP	75 mm x 75 mm	#40000	36000	28000		18000														
CMV10L	0.75 kW	1 HP	75 mm x 75 mm	54000	45500	27000	13400															
CMQ15-W	1.1 kW	1.5 HP	50 mm x 50 mm			24600		21500	18500	15000		11000	8400									
CMR15-W	1.1 kW	1.5 HP	65 mm x 50 mm			28200		24000	20000	15000	11000											
NEW CMR15D-W	1.1 kW	1.5 HP	65 mm x 50 mm			28200		24000	20000	15000	11000											
CMV15	1.1 kW	1.5 HP	75 mm x 75 mm		42000	38200		32400	24960													
CMV15L	1.1 kW	1.5 HP	75 mm x 75 mm		42000	38200		32400	24960													
CMV15L-HF	1.1 kW	1.5 HP	75 mm x 75 mm		49800	40320		30400	18000													
CMV15-WHF	1.1 kW	1.5 HP	75 mm x 75 mm		49800	40320		30400	18000													

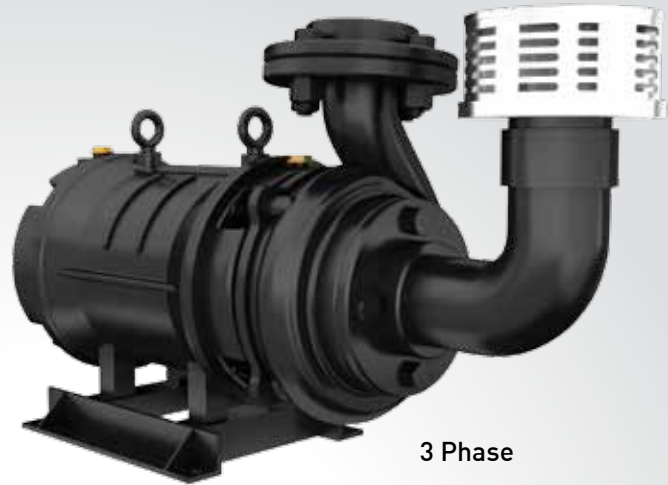
Model	Power		Pipe Size (Suc x Del)	Total Head in metre																		
				6 m	8 m	9 m	10 m	12 m	14 m	15 m	16 m	18 m	19 m	20 m	21 m	22 m	24 m	25 m	26 m	28 m	30 m	
	kW	HP	mm	Discharge in Litre per Hour																		
CMJ20	1.5 kW	2 HP	50 mm x 40 mm					21000	20800		20300	19600		18400		17300	15800		13400	11000	6960	
CMJ20D	1.5 kW	2 HP	50 mm x 40 mm					21000	20800		20300	19600		18400		17300	15800		13400	11000	6960	
CMQ20	1.5 kW	2 HP	50 mm x 50 mm					24000	22200		20500	18700		16800		14500	12000					
CMQ20D-W	1.5 kW	2 HP	50 mm x 50 mm					24000	22500		20500	18400		16500		14400	12000					
CMR20-W	1.5 kW	2 HP	65 mm x 50 mm				30000	28200	24600		21000	16200	12900	7200								
CMR20D-W	1.5 kW	2 HP	65 mm x 50 mm				30000	28200	24600		21000	16200	12900	7200								
CMR20DHH	1.5 kW	2 HP	65 mm x 50 mm					24000	22200		20500	18700		16800		14500	12000					
CMS20L	1.5 kW	2 HP	75 mm x 65 mm	50600	41160		31360	18800														
CMS20-W	1.5 kW	2 HP	75 mm x 65 mm	50600	41160		31360	18800														
CMS20D-W	1.5 kW	2 HP	75 mm x 65 mm	50600	41160		31360	18800														
CMS20DE-W	1.5 kW	2 HP	75 mm x 65 mm	50600	41160		31360	18800														
CMV20L	1.5 kW	2 HP	75 mm x 75 mm	51600	42000		32000	19200														
CMV20-W	1.5 kW	2 HP	75 mm x 75 mm	51600	42000		32000	19200														
CMV20D-W	1.5 kW	2 HP	75 mm x 75 mm	51600	42000		32000	19200														
CMV20DE-W	1.5 kW	2 HP	75 mm x 75 mm	51600	42000		32000	19200														
CMJ30D-W	2.2 kW	3 HP	50 mm x 40 mm							30000		28500			26000		22400			17500	14000	
CMQ30D-W	2.2 kW	3 HP	50 mm x 50 mm							30000		28500			26000		22400			17500	14000	
CMR30D-W	2.2 kW	3 HP	65 mm x 50 mm			32400		29000	26000		23000				19800	16400	15500					
CMR30-W	2.2 kW	3 HP	65 mm x 50 mm			32400		29000	26000		23000				19800	16400	15500					
CMV30D-W	2.2 kW	3 HP	75 mm x 75 mm	58000		51500		44400	28200													
CMV30-W	2.2 kW	3 HP	75 mm x 75 mm	58000		51500		44400	28200													
CMW30D-W	2.2 kW	3 HP	100 mm x 100 mm	64000		53500		43200	32000													
CMW30-W	2.2 kW	3 HP	100 mm x 100 mm	64000		53500		43200	32000													

@ 4 metre head.

* With High Quality Aluminum Motor Body.

HIGH FLOW W-SERIES

OPEN WELL SUBMERSIBLE PUMP



3 Phase

- Pump-set designed as per IS 14220
- Cathodic Electro Deposition (CED) cast iron parts
- High-grade stainless-steel shaft to avoid corrosion
- Dynamically balanced copper rotor with trouble free & efficient operation
- Carbon + SS 420 thrust bearing

Applications:

- Domestic & community water supply
- Gardening & small farm irrigations
- Water supply to over head tanks

*Suction bend not in Havells scope.

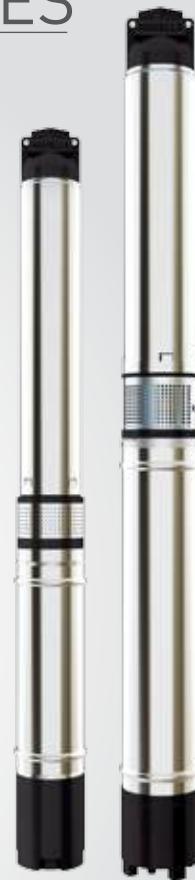
Model	Power		Pipe Size (Suc x Del)	Total Head in metre																			
	kW	HP		mm	14 m	15 m	17 m	19 m	20 m	23 m	24 m	25 m	26 m	27 m	28 m	30 m	32 m	33 m	35 m	41 m	46 m	50 m	54 m
			Discharge in Litre per minute																				
WJ3T	2.2 kW	3 HP	50 mm x 40 mm							430	400		340	310	220	90							
WR3T	2.2 kW	3 HP	65 mm x 50 mm		610	570	520		400	360	320	260	200										
WJ3H	2.2 kW	3 HP	50 mm x 40 mm							430	400		340	310	220	90							
WR3H	2.2 kW	3 HP	65 mm x 50 mm		610	570	520		400	360	320	260	200										
WR5T	3.7 kW	5 HP	65 mm x 50 mm		850	800	750		650		590		530	480	380	260	200						
WR5H	3.7 kW	5 HP	65 mm x 50 mm		850	800	750		650		590		530	480	380	260	200						
WS5T	3.7 kW	5 HP	80 mm x 65 mm	1050		940	850	800	610	520	420	300											
WS5H	3.7 kW	5 HP	80 mm x 65 mm	1050		940	850	800	610	520	420	300											
WR7.5T	5.5 kW	7.5 HP	65 mm x 50 mm												780			710	610	510	390	220	
WS7.5T	5.5 kW	7.5 HP	80 mm x 65 mm					1200	1090		1010		920	870	770	650	590	400					

HIGH FLOW / HIGH HEAD

BOREWELL SUBMERSIBLE PUMP SERIES

7.5 cm (75 mm) Water Filled (V3)

10 cm (100 mm) Water Filled/Oil Filled (V4)



Motor:

- Performance of Havells Pumpsets confirms to IS 8034.
- Pump - Motor coupling as per NEMA or Key type
- Wide voltage operating range (160 V - 240 V), (140 V - 240 V)
- High grade Silicon stampings for optimum efficiency & low power consumption.
- Water filled motors fitted with High quality Carbon Vs stainless steel thrust bearing that withstand axial thrust load.
- Oil filled motors fitted with Anti-friction Bearings for axial/radial loads ensure longer life.
- Dynamically balanced rotor on CNC balancing machine for trouble free operation.
- Motor provided with Pressure diaphragm to compensate excess pressure due to heating of Oil or Water.
- Cathodic Electro Deposition (CED) coated Cast Iron Parts

Pump:

- High-grade Noryl with 30% GF Impeller-Diffuser set with neck-ring prevents wear and tear.
- SS-410 grade stainless steel shaft for corrosion free use.
- Fitted with LTB (Leaded Tin Bronze) bush for high wear resistance.
- Stainless Steel tube for Motor and pump, for rust free operation.
- Modular construction and easy interchangeability of components.
- Cathodic Electro Deposition (CED) coated Cast Iron Parts.

Applications:

- Lifting water from borewell for domestic applications.
- Gradening, High Story bulidings & complexes
- Irrigation & Drip Irrigation, Sprinklers.

PERFORMANCE CHART OF 75 mm / 80 mm (V3) WATER FILLED SUBMERSIBLE PUMP FOR 1-PHASE

MODEL	Power		Stage	Pipe Size	Discharge in Litre per minute														
	kW	HP			15	20	25	30	35	40	45	50	55	60	65	70	75	80	100
Water Filled	kW	HP		mm	Head in metre														
ALPHA C3W10R2BN10	0.75 kW	1 HP	10	32 mm	37 m		34 m		31 m			26 m		23 m		19 m			6 m
H3W12R1B10J	0.75 kW	1 HP	12	32 mm	44 m		41 m		37 m	35 m	33 m	30 m		25 m		18 m	14 m	9 m	
ALPHA C3W12R1BN10	0.75 kW	1 HP	12	32 mm	44 m		41 m		37 m	35 m	33 m	30 m		25 m		18 m	14 m	9 m	
H3W16R1B10J	0.75 kW	1 HP	16	32 mm	57 m		52 m		47 m	44 m	41 m	37 m		29 m		20 m	15 m	10 m	
H3W20R3B10J*	0.75 kW	1 HP	20	32 mm			73 m	70 m	66 m	60 m	54 m	47 m	40 m	32 m					
H3W35R3B15J*	1.1 kW	1.5 HP	35	32 mm		125 m	115 m	108 m	100 m	90 m	80 m	70 m	57 m	40 m					

*With 80 mm pumset diameters

Model	Power		Stage	Pipe Size	Discharge in Litre per minute																
					50	60	70	80	90	100	110	120	125	130	140	150	160	170	210	270	300
Turbo Champ	kW	HP		mm	Head in metre																
HRT4W15D30S	2.2 kW	3 HP	15	50 mm	103	100	97		88	82		68		60	52	46	40				
HCT4W12D30S	2.2 kW	3 HP	12	50 mm							57							50	45	35	28
HCT4W22B30S	2.2 kW	3 HP	22	32 mm	119	112	105	98	90	80	70	60	54								

PERFORMANCE CHART OF 100 mm (V4) WATER FILLED / OIL FILLED SUBMERSIBLE PUMP FOR 1-PHASE

MODEL		Power		Stage	Pipe Size	Discharge in Litre per minute																				
Cora	Oil Filled	kW	HP			mm	10	15	20	25	30	35	40	50	60	65	70	75	85	95	100	115	120	130	140	155
				Head in metre																						
HC4W8B05S	HC4O8B05S	0.37 kW	0.5 HP	8	32 mm					38		33	28	22		16										
HC4W12B08S		0.55 kW	0.75 HP	12	32 mm					55		49	41	32		22	15									
	HC4O7CN10S	0.75 kW	1 HP	7	40 mm					44	43		39	36		27		20		12						
	HC4O7BN10S				32 mm				44	43		39	36		27		20		12							
HC4W8C10S	HC4O10BN10S	0.75 kW	1 HP	8	40 mm							46			43	42		39		35	31		26	22	16	11
	HC4O13B10S	0.75 kW	1 HP	10	32 mm					52		48		44				31	28		15					
HC4W13B10S		0.75 kW	1 HP	13	32 mm		68	67	65	63	60	57	48	37	31	25										
HC4W15B10S		0.75 kW	1 HP	15	32 mm		77		72		66		53	43		29										
	HC4O16B10S	0.75 kW	1 HP	16	32 mm	108		94		80		63		20												
	HC4O12CN15S	1.1 kW	1.5 HP	12	40 mm					63	62	60			51		42	35	32	20	15					
	HC4O12BN15S				32 mm				63	62	60		51		42	35	32	20	15							
HC4W15B15S	HC4O15BN15S	1.1 kW	1.5 HP	15	32 mm					77		71		64				43	38	23	16					
HC4W18B15S		1.1 kW	1.5 HP	18	32 mm		82		77	73	68	62	47		21	12										
HC4W20B15S		1.1 kW	1.5 HP	20	32 mm		93		86	81	76	70	55		26	15										
	HC4O18B15S	1.1 kW	1.5 HP	18	32 mm		88	86	83	79	75	70	58	43	34	24										
	HC4O20B15S	1.1 kW	1.5 HP	20	32 mm		98	95	92	88	84	79	65	46	36	25										
	HC4O10D20S	1.5 kW	2.0 HP	10	50 mm									61			57		53		48			40	34	32
HC4W14C20S		1.5 kW	2.0 HP	14	40 mm	90			84			75		63		55		42	30							
	HC4O18BN20S	1.5 kW	2.0 HP	18	32 mm	112		108		102		95		77		67		35								
HC4W18C20S		1.5 kW	2.0 HP	18	40 mm	112		108		102		95		77		67		35								

Digital Control Panel

CONTROL PANEL Power Guard

(For 75 mm / 100 mm SUBMERSIBLE PUMP)

Product Features:

- Available in Water Filled / Oil Filled submersible motor configuration
- Powder coated enclosure for rust Prevention & Longer Life
- Digital smart display for clear identification of current and Voltage
- OLP, MCB & Contactor combination for better Efficiency & Performance against product safety
- Applicable for 75 mm / 100 mm Borewell Submersible Pump application
- Suitable for wide voltage operation
- High quality rubber gasket to prevent dust entry
- Five-way connector for easy connection



SINLGE PHASE CONTROL PANEL (WATER FILLED / OIL FILLED SUBMERSIBLE PUMP)

Power		Type	FG Code	Description	OLP	MCB (A)	Contactor	Run Capacitor (μF)	Start Capacitor (μF)
KW	HP								
0.37 kW	0.5 HP	Water Filled	MHPZYS0X50	0.37 kW (0.5 HP) - 1 PH -V4 W/F CP SUB PUMP	6 A	10 A	16 A	36 μF	120 μF - 150 μF
0.37 kW	0.5 HP	Oil Filled	MHPZXS0X50	0.37 kW (0.5 HP) - 1 PH -V4 O/F CP SUB PUMP	6 A				NA
0.75 kW	1.0 HP	Water Filled	MHPZYS1X00	0.75 kW (1.0 HP) - 1 PH -V4 W/F CP SUB PUMP	10 A	16 A	20 A	50 μF	120 μF - 150 μF
0.75 kW	1.0 HP	Oil Filled	MHPZXS1X00	0.75 kW (1.0 HP) - 1 PH -V4 O/F CP SUB PUMP	10 A				36 μF
1.1 kW	1.5 HP	Water Filled	MHPZYS1X50	1.1 kW (1.5 HP) - 1 PH -V4 W/F CP SUB PUMP	14 A	20 A	24 A	36 μF + 36 μF	150 μF - 200 μF
1.1 kW	1.5 HP	Oil Filled	MHPZXS1X50	1.1 kW (1.5 HP) - 1 PH -V4 O/F CP SUB PUMP	12 A				50 μF
1.5 kW	2 HP	Water Filled	MHPZYS2X00	1.5 kW (2.0 HP) - 1 PH -V4 W/F CP SUB PUMP	16 A	20 A	20 A	72 μF	150 μF - 200 μF
1.5 kW	2 HP	Oil Filled	MHPZXS2X00	1.5 kW (2.0 HP) - 1 PH -V4 O/F CP SUB PUMP	13 A				NA
2.2 kW	3 HP	Water Filled	MHPZYS3X00	2.25 kW (3.0 HP) - 1 PH -V4 W/F CP SUB PUMP	25 A	30 A	32 A	50 μF + 50 μF	200 μF - 250 μF

Product Applications:

Compulsory use with 75 mm / 100 mm borewell water filled or oil filled submersible pumps for smooth operation of pumps.

BOREWELL SUBMERSIBLE PUMP SERIES

HIGH FLOW / HIGH HEAD

12.5 cm (125 mm) Water Filled (V5)

15 cm (150 mm) Water Filled (V6)

17.5 cm (175 mm) Water Filled (V7)



Motor:

- Totally Enclosed, Water Filled, Squirrel Cage, 2 Pole 2900 r/min (revolutions per minute), suitable for Wide Voltage (300 V - 440 V), 3 Phase, 50 Hz, AC supply.
- Polywrap Insulated Copper Wire.
- Energy Efficient Design - Saves Power
- Dynamically Balanced Copper Rotor - Better Efficiency & Performance.
- Specially Designed self-aligned carbon Vs stainless steel thrust bearing that withstand high axial thrust load.

Pump:

- Available with Radial / Mix Flow Type Impeller Design.
- Epoxy Coating to All Ferrous Parts - Rust Prevention & Longer Life.
- Dynamically Balanced Impellers - Better life & Performance
- Non Return Valve reduces the thrust load of back pressure.
- Stainless Steel Pump Shaft (Grade SS 420) - Rust Prevention & Longer Life
- Stainless Steel Impellers (Grade SS 410) with Neck ring- Better Efficiency & Longer Life

Applications:

- Agriculture Farms
- Sprinkler & Drip Irrigation
- Multistoried Buildings
- Construction Sites
- Water supply for Industrial
- Commercial & Residential Establishments



BOREWELL SUBMERSIBLE PUMP SERIES

(HIGH HEAD STAINLESS STEEL PUMP)

15 cm (150 mm) Water Filled (V6)

Product Features:

Motor:

- Totally Enclosed, Water Filled, Squirrel Cage, 2 Pole, suitable for 3 Phase, 50 Hz, AC supply.
- Polywrap Insulated Copper Wire.
- Dynamically Balanced Copper Rotor - Better Efficiency & Performance.
- Specially Designed self-aligned segmented Bearing - Lower Power Consumption.
- Three Piece Construction Motor – Robust Construction & Easy Maintenance.
- CED Coating/Epoxy Coating to All Ferrous Parts - Rust Prevention & Longer Life.
- Stainless Steel Motor Shaft- Rust Prevention & Longer Life.

Pump:

- CED Coating/Epoxy Coating to All Ferrous Parts - Rust Prevention & Longer Life.
- Dynamically Balanced Impellers - Better Efficiency & Performance.
- Stainless Steel Pump Shaft and Impeller - Rust Prevention & Longer Life.



Sr. No.	Part Name	Material of Construction
1	Impeller	Stainless Steel 410
2	Bowl	Stainless Steel 304
3	NRV Housing	Cast Iron FG 200
4	Pump Shaft	Stainless Steel 410
5	Motor Shaft	Stainless Steel 410
6	Motor Upper Housing	Cast Iron FG 200
7	Motor Lower Housing	Cast Iron FG 200
8	Motor Bearing Bush	Low Tensile Bronze LTB-4

Product Applications:

- Agricultural farms
- Multi story buildings
- Construction sites
- Fountains



PERFORMANCE CHART OF 150 mm (V6) Motor & 150 mm (V6) Pump - (High Head Stainless steel pump)

MODEL	Power		Stage	Pipe Size	Discharge in Litre per minute												
					80	100	120	130	145	160	170	195	200	220	230	260	290
Water Filled	kW	HP		mm	Head in metre												
50H6W4R6D30T	2.2 kW	3 HP	4	50 mm		58		55		52			48		45	36	26
50H6W5R5D30T	2.2 kW	3 HP	5	50 mm	72	68	65		60		52	42		30			
50H6W6R6D50T	3.7 kW	5 HP	6	50 mm		87		83		78			72		68	54	39
50H6W8R5D50T	3.7 kW	5 HP	8	50 mm	112	109	104		96		83	67		52			
50H6W10R6D75T	5.5 kW	7.5 HP	10	50 mm		148		138		130			120		113	90	65
50H6W12R5D75T	5.5 kW	7.5 HP	12	50 mm	170	163	156		144		125	101		78			
50H6W12R6D100T	7.5 kW	10 HP	12	50 mm		176		165		156			144		135	108	78
50H6W16R5D100T	7.5 kW	10 HP	16	50 mm	228	218	208		192		166	134		95			

MODEL	Power		Stage	Pipe Size	Discharge in Litre per minute													
					110	150	170	190	225	230	270	280	310	335	350	390	445	500
Water Filled	kW	HP		mm	Head in metre													
50H6W5R7E50T	3.7 kW	5 HP	5	65 mm	76	73		70		65	58		47		35			
50H6W6R8E75T	5.5 kW	7.5 HP	6	65 mm			92		88			83		77		67	57	42
50H6W8R7E75T	5.5 kW	7.5 HP	8	65 mm	124	117		112		104	93		75		58			
50H6W8R8E100T	7.5 kW	10 HP	8	65 mm			122		115			108		102		90	75	56
50H6W10R7E100T	7.5 kW	10 HP	10	65 mm	154	146		140		130	116		94		70			

MODEL	Power		Stage	Pipe Size	Discharge in Litre per minute												
					100	160	200	250	300	340	350	400	430	450			
Water Filled	kW	HP		mm	Head in metre												
50H6W15R7D150T	11 kW	15.0 HP	15	50 mm	236	215	196	169	135			94					
50H6W18R6D150T	11 kW	15.0 HP	18	50 mm	260	240	215	180	135	94							
50H6W14R8E175T	13 kW	17.5 HP	14	65 mm		220	210	190	165			155	110	90			
50H6W18R7D175T	13 kW	17.5 HP	18	50 mm	283	258	235	203	162			110					
50H6W16R8E200T	15 kW	20 HP	16	65 mm		245	230	210	185			175	125	100			
50H6W20R7D200T	15 kW	20 HP	20	50 mm	315	287	261	225	180			125					
50H6W16R9E250T	18.7 kW	25 HP	16	65 mm			240	220	195			185	140	122	110		
50H6W20R8E250T	18.7 kW	25 HP	20	65 mm		306	288	263	231			219	156	125			

Cable Selection Chart:

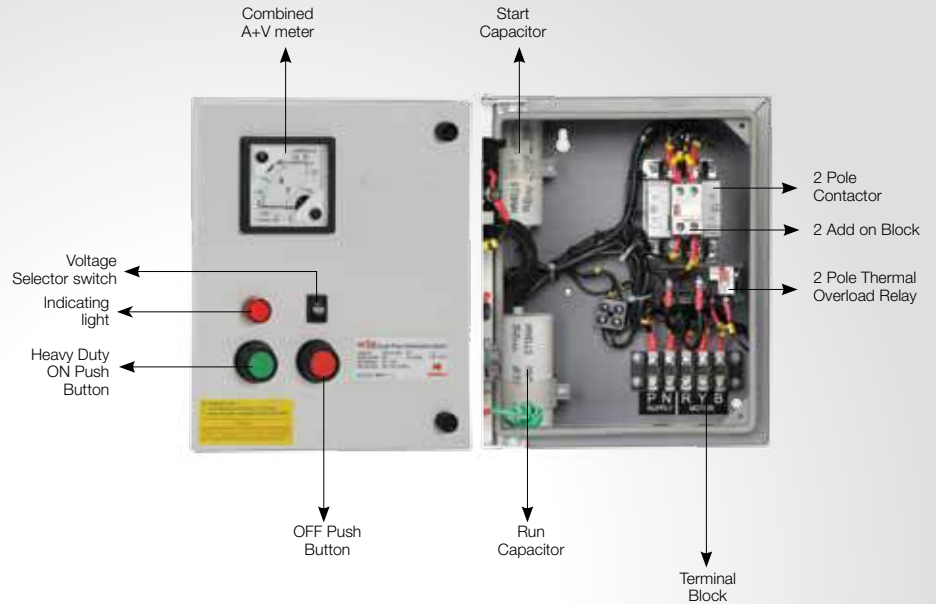
Cable Selection for 220 V, 1 Phase, 50 Hz Submersible Pumpset																									
kW	HP	Cable Size mm ²	Length of Cable in Metre																						
			10	20	30	40	50	60	70	80	90	100	110	120	140	180	200	220	270	320	370	420	470	500	
0.37 kW	0.5 HP	Cable Size mm ²	1.5	1.5	1.5	1.5	1.5	1.5	1.5	1.5	1.5	1.5	1.5	1.5	1.5	1.5	2.5	4	4	4	6	6	6		
0.55 kW	0.75 HP		1.5	1.5	1.5	1.5	1.5	1.5	1.5	1.5	2.5	2.5	2.5	2.5	2.5	4	4	4	6	6	10	10	10	10	
0.75 kW	1 HP		1.5	1.5	1.5	1.5	1.5	1.5	2.5	2.5	2.5	2.5	2.5	2.5	4	4	4	6	6	6	10	10	10	16	16
1.1 kW	1.5 HP		1.5	1.5	1.5	1.5	2.5	2.5	2.5	4	4	4	4	4	6	6	6	10	10	10	16	16	16	16	25
1.5 kW	2 HP		2.5	2.5	2.5	2.5	2.5	2.5	4	4	4	4	4	6	6	6	10	10	10	16	16	16	25	25	
2.2 kW	3 HP		2.5	2.5	2.5	2.5	4	4	6	6	6	6	6	10	10	10	16	16	16	16	25	25	35	35	
3.0 kW	4 HP		4	4	4	4	4	6	6	6	6	10	10	16	16	16	16	25	25	35	35	35	35	35	
3.7 kW	5 HP		4	4	4	4	6	6	10	10	10	10	10	16	16	25	25	25	35	35	35	50	50	50	
4.5 kW	6 HP		6	6	6	6	10	10	10	10	10	16	16	16	25	25	25	35	35	35	50	50	50	50	
5.5 kW	7.5 HP		6	6	6	10	10	10	10	10	10	16	16	25	25	25	35	35	35	50	50	50	50	50	
7.5 kW	10 HP	10	10	10	10	10	10	10	10	16	25	25	25	25	35	35	35	50	50	50	50	50	50		

Cable Selection for 415 V, 3 Phase, 50 Hz, Dual Cable Submersible Pumpsets																								
kW	HP	Cable Size mm ²	Length of Cable in Metre																					
			10	20	30	40	50	60	70	80	90	100	110	120	140	180	200	220	270	320	370	420	470	500
5.5 kW	7.50 HP	Cable Size mm ²	1.5	1.5	1.5	1.5	1.5	1.5	2.5	2.5	2.5	1.5	2.5	2.5	2.5	4	4	4	4	6	6	6	10	10
7.5 kW	10 HP		2.5	2.5	2.5	2.5	2.5	2.5	2.5	2.5	2.5	2.5	2.5	4	4	4	6	6	6	10	10	10	10	16
9.3 kW	12.5 HP		4	4	4	4	4	4	4	4	4	4	4	4	6	6	6	10	10	10	16	16	16	16
11.3 kW	15 HP		4	4	4	4	4	4	4	4	4	4	4	4	6	6	6	10	10	10	16	16	16	16
13.1 kW	17.5 HP		4	4	4	4	4	4	4	4	4	4	6	6	6	10	10	10	10	16	16	16	25	25
14.9 kW	20 HP		4	4	4	4	4	4	4	4	4	4	6	6	6	10	10	10	10	16	16	16	25	25
16.8 kW	22.5 HP		6	6	6	6	6	6	6	6	6	6	6	10	10	10	10	16	16	16	25	25	25	25
18.7 kW	25 HP		6	6	6	6	6	6	6	6	6	6	6	10	10	10	10	16	16	16	25	25	25	25
22.4 kW	30 HP		6	6	6	6	6	6	6	6	6	6	10	10	10	10	16	16	16	25	25	25	35	35

Cable Selection for 415 V, 3 Phase, 50 Hz, Single Cable Submersible Pumpsets																									
kW	HP	Cable Size mm ²	Length of Cable in Metre																						
			10	20	30	40	50	60	70	80	90	100	110	120	140	180	200	220	270	320	370	420	470	500	
0.55 kW	0.75 HP	Cable Size mm ²	1.5	1.5	1.5	1.5	1.5	1.5	1.5	1.5	1.5	1.5	1.5	1.5	1.5	1.5	1.5	1.5	1.5	1.5	1.5	1.5	1.5		
0.75 kW	1 HP		1.5	1.5	1.5	1.5	1.5	1.5	1.5	1.5	1.5	1.5	1.5	1.5	1.5	1.5	1.5	1.5	1.5	1.5	1.5	1.5	1.5	2.5	
1.1 kW	1.5 HP		1.5	1.5	1.5	1.5	1.5	1.5	1.5	1.5	1.5	1.5	1.5	1.5	1.5	1.5	1.5	1.5	1.5	1.5	2.5	2.5	2.5	2.5	
1.5 kW	2 HP		1.5	1.5	1.5	1.5	1.5	1.5	1.5	1.5	1.5	1.5	1.5	1.5	1.5	1.5	1.5	1.5	2.5	2.5	2.5	2.5	2.5	4	
2.2 kW	3 HP		1.5	1.5	1.5	1.5	1.5	1.5	1.5	1.5	1.5	1.5	1.5	1.5	1.5	1.5	2.5	2.5	2.5	2.5	4	4	4	6	6
3.0 kW	4 HP		2.5	2.5	2.5	2.5	2.5	2.5	2.5	2.5	2.5	2.5	2.5	2.5	2.5	2.5	2.5	4	4	4	6	6	6	6	
3.7 kW	5 HP		2.5	2.5	2.5	2.5	2.5	2.5	2.5	2.5	2.5	2.5	2.5	2.5	2.5	4	4	4	4	6	6	10	10	10	
4.5 kW	6 HP		4	4	4	4	4	4	4	4	4	4	4	4	4	4	4	4	6	6	6	10	10	10	
5.5 kW	7.5 HP		4	4	4	4	4	4	4	4	4	4	4	4	4	4	4	6	6	6	10	10	10	16	16
7.5 kW	10 HP		6	6	6	6	6	6	6	6	6	6	6	6	6	6	6	10	10	10	10	16	16	16	16
9.3 kW	12.5 HP		6	6	6	6	6	6	6	6	6	6	6	6	6	6	10	10	10	16	16	16	25	25	25
11.3 kW	15 HP		6	6	6	6	6	6	8	8	8	8	8	8	8	8	10	10	10	16	16	16	25	25	25
13.1 kW	17.5 HP		6	6	6	6	6	6	8	8	8	8	8	8	10	10	10	16	16	16	25	25	25	35	35
14.9 kW	20 HP		8	8	8	8	8	8	8	8	8	8	8	8	10	10	10	16	16	16	25	25	25	35	35
16.8 kW	22.5 HP		8	8	8	8	8	8	8	8	10	10	10	10	10	16	16	16	25	25	35	35	35	50	50
18.7 kW	25 HP		8	8	8	8	8	8	8	8	10	10	10	10	10	16	16	16	25	25	35	35	35	50	50
22.4 kW	30 HP		10	10	10	10	10	10	10	10	10	10	10	16	16	16	25	25	25	35	35	50	50	50	50

Accessories Available for Submersible Pumps:

Single Phase submersible pump controller



Flat three core submersible cables



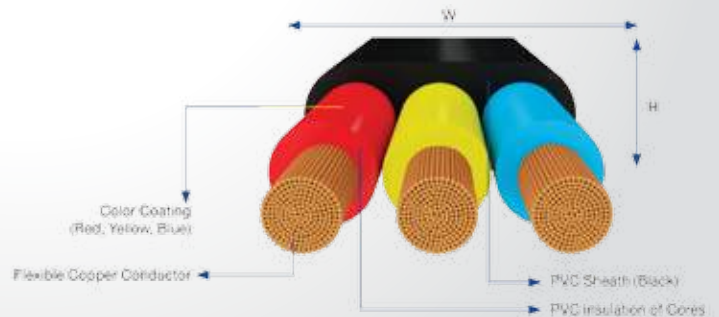
Application

Used for critical space requirements, protection against impact of corrosive liquids and abrasion while being indefinitely immersed in water.

Type FR PVC Insulated, flat sheathed, 3C - 1.5 mm² to 35 mm²

Features

- Protection against rain water.
- Protection against ingress of small solid foreign bodies.
- Available in 100 m pack.





Actual products may vary in colour, design, description and colour combination etc.
Although every effort has been made to ensure accuracy in the compilation of the technical detail within this publication.
Specifications & performance data are constantly changing.
Copyright Subsists. Imitation of trade dress, graphics and color scheme of this document is a punishable offence.
Diagrams & images in this document are for illustration purposes only.
Performance applicable to liquid with specific gravity 1 & viscosity like water. Performance figure given above are approximate & many differ based on the site conditons. Total head given is the sum total of static suction lift. static delivery head & losses in the pipes, bends etc.

Havells India Ltd.

Corp Office: QRG Towers, 2D, Sector-126, Expressway,
Noida-201304 (U. P.) India Ph. +91-120-4771000

Email : customercare@havells.com, Website: www.havells.com

Customer Care No. 08045 77 1313 (All Connections), 011-4166 0303 (Landline)

Join us on Facebook at www.facebook.com/havells and share your ways to save the planet !

CIN - L31900DL1983PLC016304

buy online* at **shop.havells.com**
*Online shopping is applicable on select products.

Conditions apply.